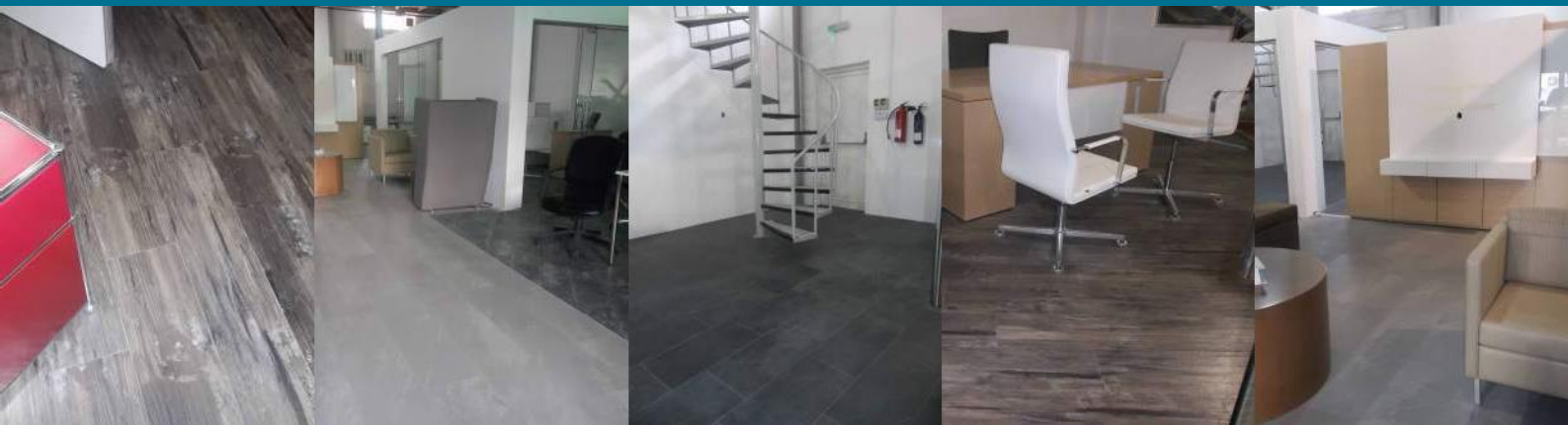




Extra Wide



LOCKING



## Extra Wide

25 YEAR  
GUARANTEE  
DOMESTIC

10 YEAR  
GUARANTEE  
COMMERCIAL

**Embossing:** True-Wood Structure / **Thickness:** 5.00 mm / **Wear Layer:** 0.55 mm /

**Coating:** PU with Ceramic Bead (CB) / **Utilization Class:** 33/42 / Produced with 100% pure vinyl. Does not contain recycled material and therefore all contents conform to EU standards. EasyLock itself can be completely recycled.



- allure Locking brings the versatility and natural look of Extra Wide and Rusty collections, state-of-the-art innovative LVT resilient flooring products.
- allure Locking offers the benefits of simple, no glue installation with no requirement of underlay or heavy tools, making it cheaper, quicker and cleaner to install.
- Completely waterproof, allure Locking is also warm and quiet underfoot. The product is durable and hygienic, making it suitable for retail, office, hospitality, leisure and residential purposes.
- The first Locking system to be launched in the resilient flooring industry, allure Locking has a proven track record of successful installations and durability.
- **allure Locking is produced with 100% pure virgin PVC, with all quality and health aspects under strict control.**
- **Completely recyclable because there are no glue residues or contaminants, allure Locking can also be dismantled and reinstalled, making it the perfect environmentally sustainable product.**



Extra Wide



Cezanne - 969107



## Extra Wide



**Embossing:** True-Wood Structure / **Thickness:** 5.00 mm / **Wear Layer:** 0.55 mm /

**Coating:** PU with Ceramic Bead (CB) / **Utilization Class:** 33/42 / Produced with 100% pure vinyl. Does not contain recycled material and therefore all contents conform to EU standards. EasyLock itself can be completely recycled.



Southern Hickory White - 100211



Van Gogh - 969101





Southern Hickory Red - 100217



Golden Oak MOcha - 96714





# Extra Wide



**Embossing:** True-Wood Structure / **Thickness:** 5.00 mm / **Wear Layer:** 0.55 mm /

**Coating:** PU with Ceramic Bead (CB) / **Utilization Class:** 33/42 / Produced with 100% pure vinyl. Does not contain recycled material and therefore all contents conform to EU standards. EasyLock itself can be completely recycled.



Smoked Oak Grey - 966104

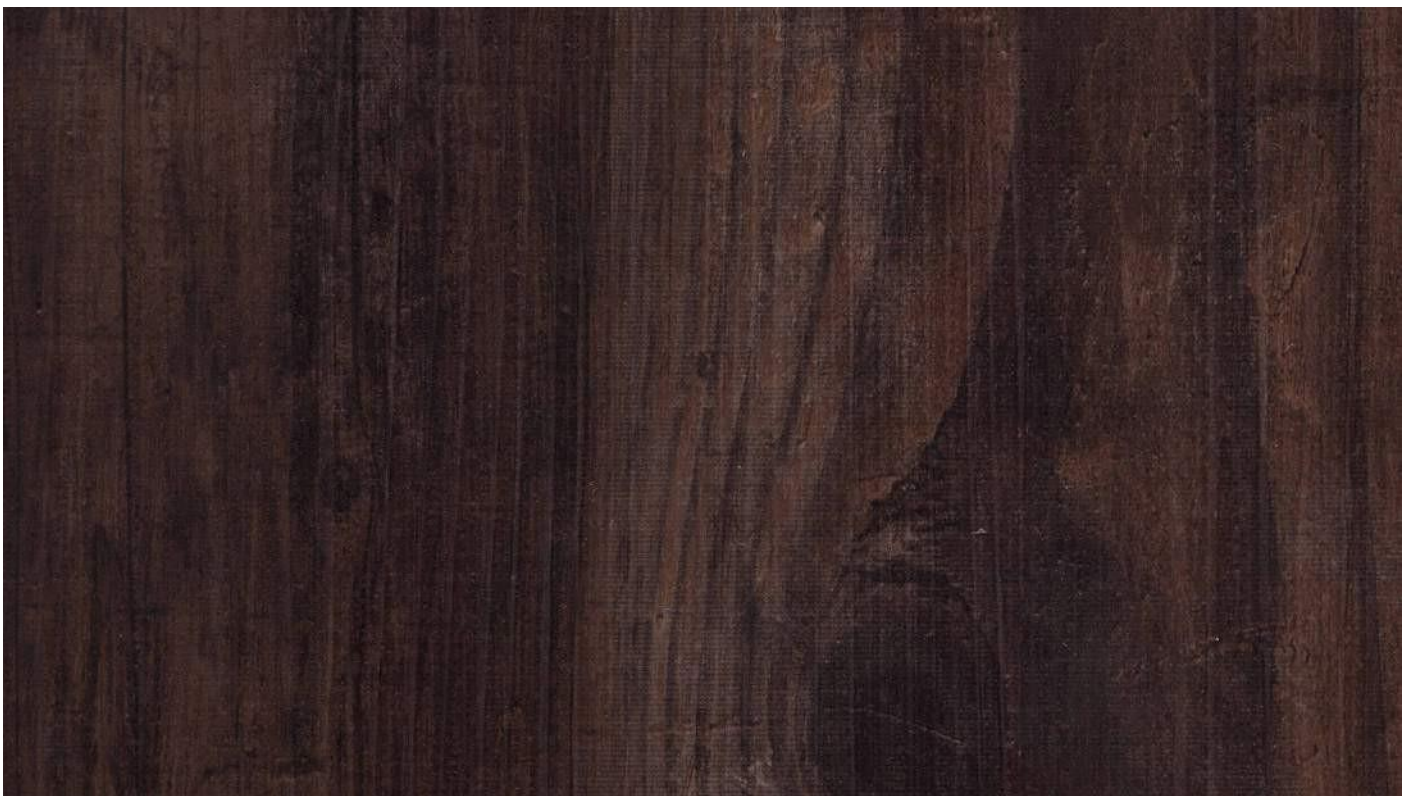


Matisse - 969106





Rustic Nutmeg - 971102



Rustic Forest - 971105



## Extra Wide



**Embossing:** True-Wood Structure / **Thickness:** 5.00 mm / **Wear Layer:** 0.55 mm /

**Coating:** PU with Ceramic Bead (CB) / **Utilization Class:** 33/42 / Produced with 100% pure vinyl. Does not contain recycled material and therefore all contents conform to EU standards. EasyLock itself can be completely recycled.




Golden Oak Arctic - 967112





# Technical Specifications

<b>allure</b> LOCKING		<b>Extra Wide</b>
Thickness (mm)		5.00
Wear Layer (mm)		0.55
Utilization Class		
Coating		PU with Ceramic Bead (CB)
Embossing		True-Wood Structure
Bevelled		yes
Fiberglass		yes
Plank Size		220 x 1210 mm
Sqm per Plank / Pack		0.266 m <sup>2</sup> / 1.86 m <sup>2</sup>
Pallet Packing		66.9 m <sup>2</sup> / 36 packs
Planks per Pack		7 planks
Net Wt/Gross Wt per Pallet		680 kg / 730 kg
Impact Sound Insulation	ISO 717-2	5 dB
Chemical Resistance	EN 423	High Resistance
Residual Indentation	EN 433	≤ 0,08 mm
Dimensional Stability	EN 434	≤ 0,08%
Color Fastness to Light	EN 20105-B02	≥ 6
Slip Resistance	DIN 51130	R10
Watertightness	EN13553	No Penetration
Wear Resistance	EN 660-2	Group T
Antimicrobial Activity	ASTM G 21-96	Class 0
Fire Rating	EN ISO 9239-1	Bfl -S1
Warranty for Domestic use		25 Years
Warranty for Commerical use		10 Years

Produced with 100% pure vinyl. Does not contain recycled material and therefore all contents conform to EU standards. Easylock itself can be completely recycled.